



PLEASE READ CAREFULLY BEFORE USING THE PRODUCT  
FOR USE WITH TRACK SYSTEM ONLY

## INSTALLATION MANUAL

### RASTER TRACK INSIDE / RAIL TRACK SYSTEM

#### MODELS.

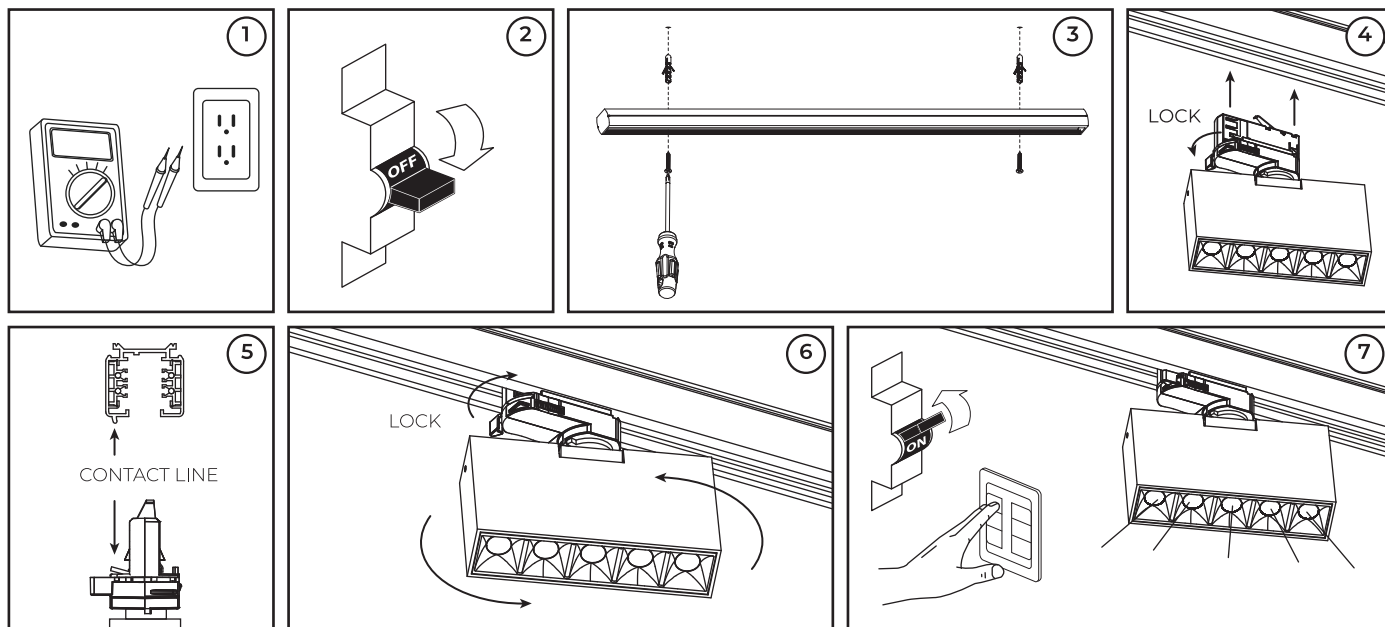
TL-2810.TRKB / TL-2810.TRKN APPLY IN ANY INSIDE COLOR, 2 200 K, 2 700 K, 3 000 K, 4 000 K OR 5 000 K LIGHT TEMPERATURE, 10°, 15°, 30° OR 45° BEAM ANGLE, CLEAR, DIFFUSED, VERTICAL OR PRISMATIC OPTICAL LEN AND DIMMABLE OR NOT DIMMABLE

#### CAUTION.

- Read all instructions.
- Do not install this track in damp or wet locations.
- Do not install any part of a track system less than 5 feet above the floor.
- Do not install any luminaire assembly closer than 6 inches from any curtain, or similar combustible material.
- Disconnect electrical power before handling or changing track lighting.

#### INSTALLATION INSTRUCTIONS.

- Verify that the available voltage is adequate for the lighting operation.
- Disconnect electrical power to circuit before installation.
- Identify the area where the rail will be placed and secure it to the ceiling using anchors and screws.  
\* Check the Rail Installation Manual for more information.
- Once the track is installed, connect the light by pushing it from the bottom up until it clicks and turn the front latch to check that the light has entered the track correctly.
- Check that the luminaire is properly positioned and makes contact with the track to energize it.
- Rotate the front lock again to ensure the luminaire is securely attached to the track. Adjust the angle of rotation of the luminaire and set it to the desired position.
- Restore the electrical current and check the correct operation of the lighting.



#### ELECTRIC SPECIFICATIONS.

LAMP: SMD LED 3030 OSRAM

POWER: 10 W

FREQUENCY: 50/60 Hz

VOLTAGE NOT DIMMABLE: 100 - 277 V~ / 0.10 - 0.03 A

VOLTAGE DIMMABLE: 90 - 130 V~ / 0.11 - 0.07 A

ENERGY CONSUMPTION: 0.01 kWh

HOURS LIFE: 35 000 h

CRI: ≥90

INTEGRATED DRIVER

OPERATING TEMPERATURE -20 °C TO +45 °C

Illux de México S.A. de C.V.  
Made in China

SAVE THESE INSTRUCTIONS

DATE CODE:



**Intertek**  
**5019329**  
Conforms to  
UL Std 1574  
UL Std 8750